



**Project**

Sunderland Carers Centre  
Sunderland

**Client**

Sunderland Carers

**Scheme description**

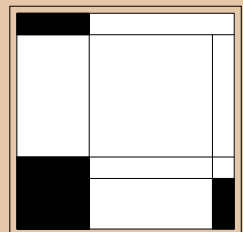
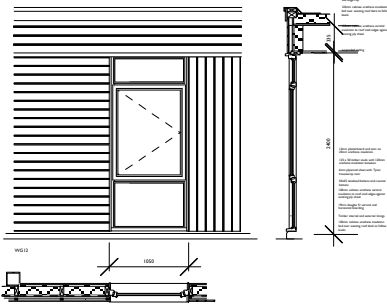
Renovation and alterations to an existing redundant single storey nursery building to form a administration and meeting facility for Sunderland Carers incorporating a new entrance, super insulation to walls and roof, refit of internal rooms and timber cladding externally

**Details**

Four month JCT contact completed April 2012 on time on budget.

**Contact**

[www.sunderlandcarers.co.uk](http://www.sunderlandcarers.co.uk)



**Ged McCormack Architect**  
Dip Arch ARIBA

17 Nile Street  
Sunderland SR1 1EY  
Tel 0191 564 0835

Email [ged.mccormack@ntlworld.com](mailto:ged.mccormack@ntlworld.com)